

## Import of ERwin Models

### INTRODUCTION

Toad Data Modeler **3.3** allows you to import **physical** models:

- Created in **ERwin 7.1** (ERwin **XML** files),
- of **Oracle 10g** and **Oracle 9i** database.

The Erwin XML file import is possible via appropriate packages available in the [Modeling community](#), Library section. Instructions on how to import and use the packages can be found [below](#).

### WHAT IS IMPORTED

These Oracle model items are imported from ERwin:

- Tables
- Columns
- Views
- Synonyms
- Procedures
- Functions
- Materialized Views
- Sequences
- Indexes
- Relationships
- FK, PK
- Triggers
- Domains
- User Data Types
- Defaults
- Packages
- Tablespaces
  
- Table Comments
- Column Comments
- Check Constraints for tables, columns and domains

## ERWIN IMPORT PACKAGES INSTRUCTIONS

1. Download the .zip file from the [Modeling community](#) site, Library section, Utilities.
2. Unzip the file. The package contains the following files:  
ORErwinPER.txg, ORErwinOR.txg, ORErwinOR9.txg, ORErwinOR10.txg
3. Copy the files to a directory where you store your user packages:

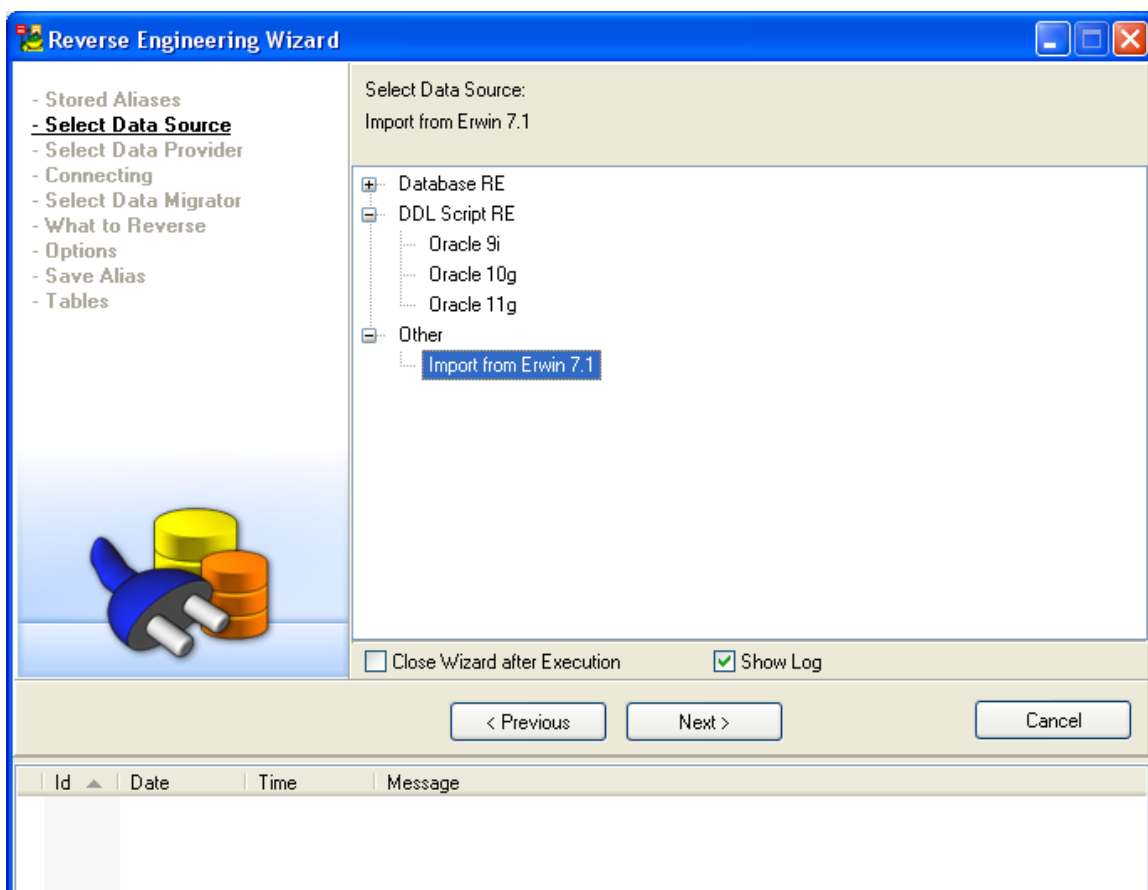
C:\Documents and Settings\user name\My Documents\Toad Data Modeler\<Installation Name>\Packages\{Some GUID number}

**Result:** In RE Wizard, there will be a new item **Import from Erwin 7.1**. You can also see the four packages in the **Package Explorer – Object RE Erwin...**

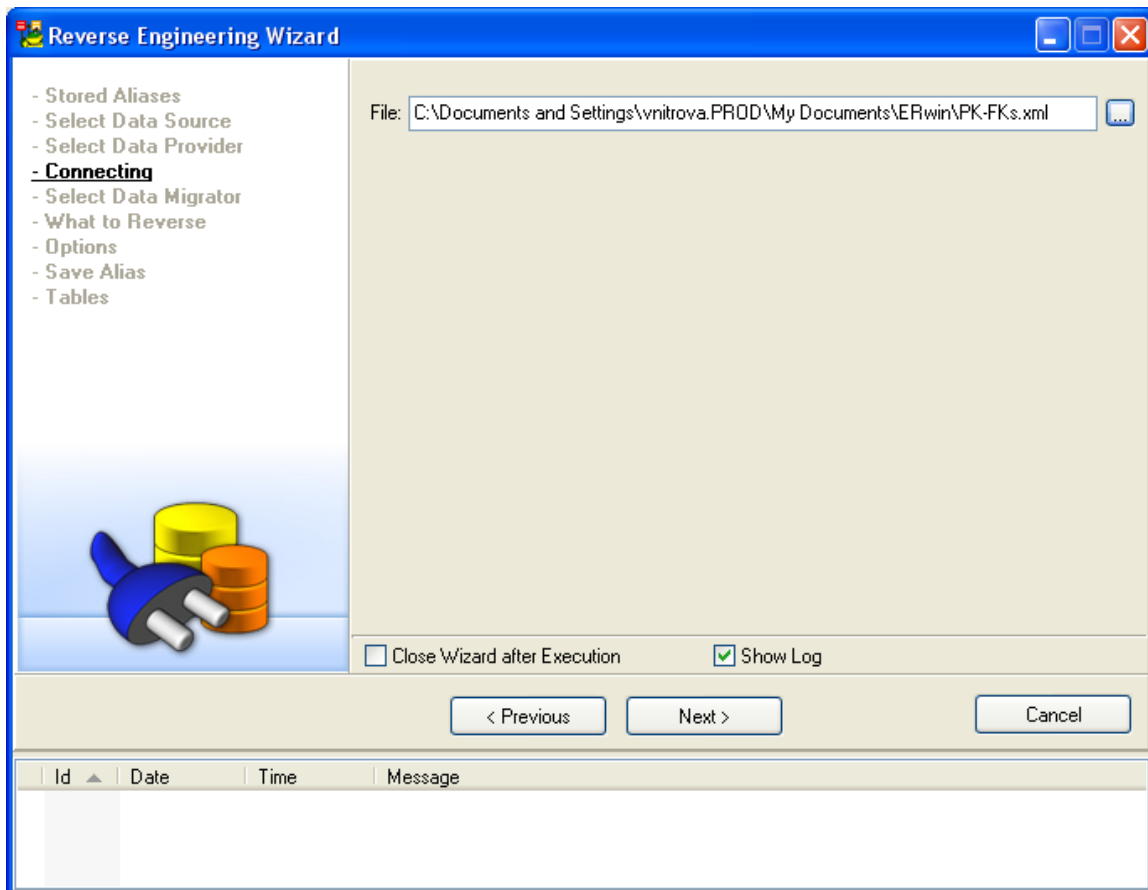
## IMPORT

The import is performed in the **Reverse Engineering Wizard**.

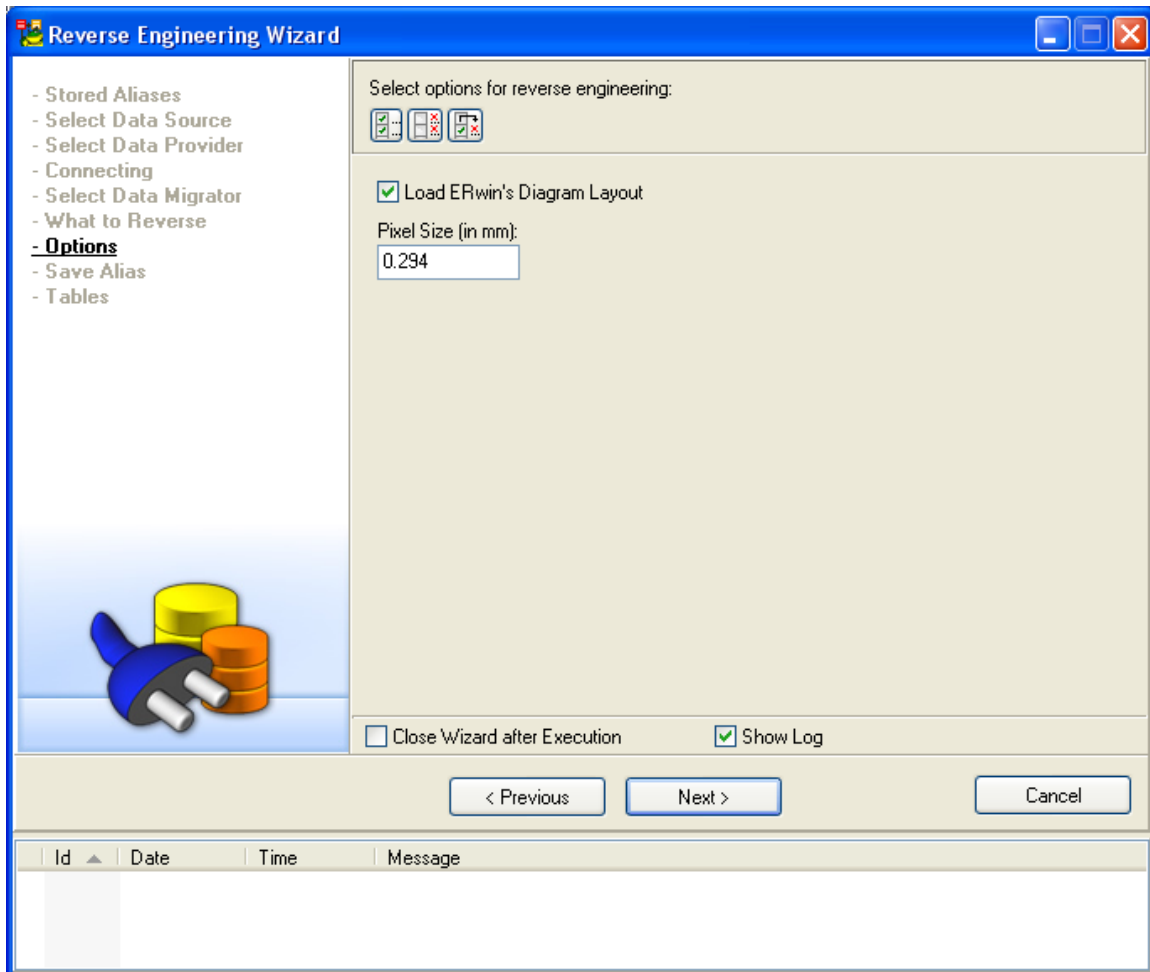
1. Open Toad Data Modeler.
2. Select **File | Reverse Engineering**.
3. In the **RE Wizard | step Select Data Source | Other | Import from Erwin 7.1**.



4. **Select Data Provider - Erwin XML model file data provider** will be selected by default.
5. In step **Connecting**, define a path to the ERwin XML file.



6. **Select Data Migrator - Import from Oracle 10g (Oracle 9i) Erwin XML file** will be selected by default.
7. In step **What to Reverse**, select Object Types and Properties you want to load.
8. Confirm the settings in the **Options** step.



9. In step **Save Alias**, you can save the settings under an alias name.
10. In step **Tables**, select the tables you want to load to Toad Data Modeler.
11. Click **Execute** to load the ERwin XML file and close the RE Wizard then.

**Notes:**

1. The import functionality is limited due to the differences between Toad Data Modeler and ERwin product.
2. ERwin allows you to create a model of this type - logical/physical for particular db, e.g. Oracle 10g. Toad Data Modeler allows you to reverse such a model as it considers it to be a physical model of Oracle 10g db. However, in fact it is not. This is a problem of Toad Data Modeler and we will fix it. CR # 55 896.  
In any case, Toad Data Modeler does not allow you to reverse logical models from ERwin.